

ADAPTING FORESTS TO CLIMATE CHANGE AND THE ROLE OF LOCAL AUTHORITIES

St. Celoni – 16/05/2018

Using forest biomass – Josep Verdaguer (Diputació de Barcelona)

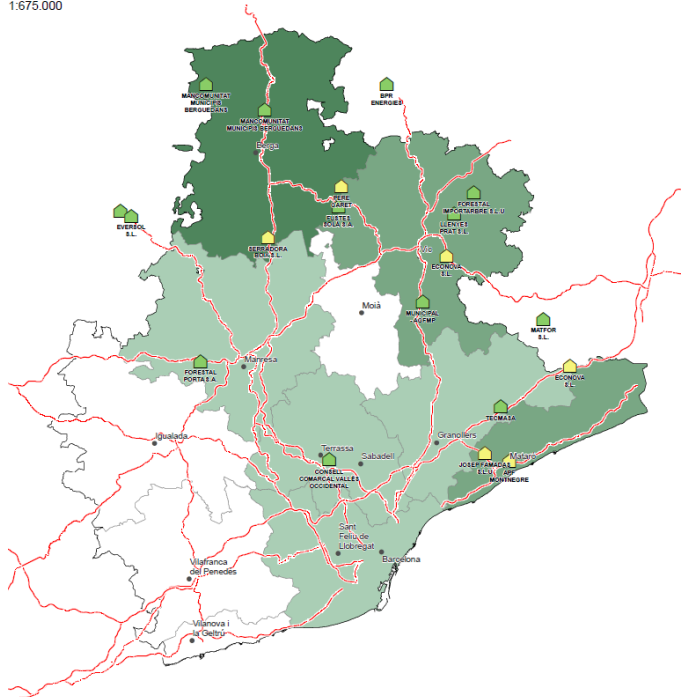
- The "Study and inventory of the potential demand for biomass in the province of Barcelona in centers or public administrations" is presented. Results: 1,690 buildings, 1,234.46 GWh / year, where biomass is viable. Education centers represent 281.86 GWh / year, sports facilities 211.45 GWh and care 158.13 GWh (total 720.11 GWh / year)
- The potential for the municipalities of Montseny is Energy potential: 6.3 GWh / year. , Tons of wood chips: 1,800 Tn
- School and sports uses have the greatest potential; Some of them are currently being implemented: La Garriga, Aiguafreda
- Existing inventory: 15 installations ..., 1,800 kW of installed power, Consumption of 435 tons per year, Example: Osona covers 10% of its thermal needs with biomass: 5.4 GWh / year
- Logistics centers: We are well covered. Logistics centers of forest chip in Balenyà, Arbúcies, Dosrius, Osona, .. Manufacturers of pellets in Prats de Lluçanès, Sta. Coloma de Farners, Granollers ...

Coordinador

Socis



ADAPTING FORESTS TO CLIMATE CHANGE AND THE ROLE OF LOCAL AUTHORITIES



Socis